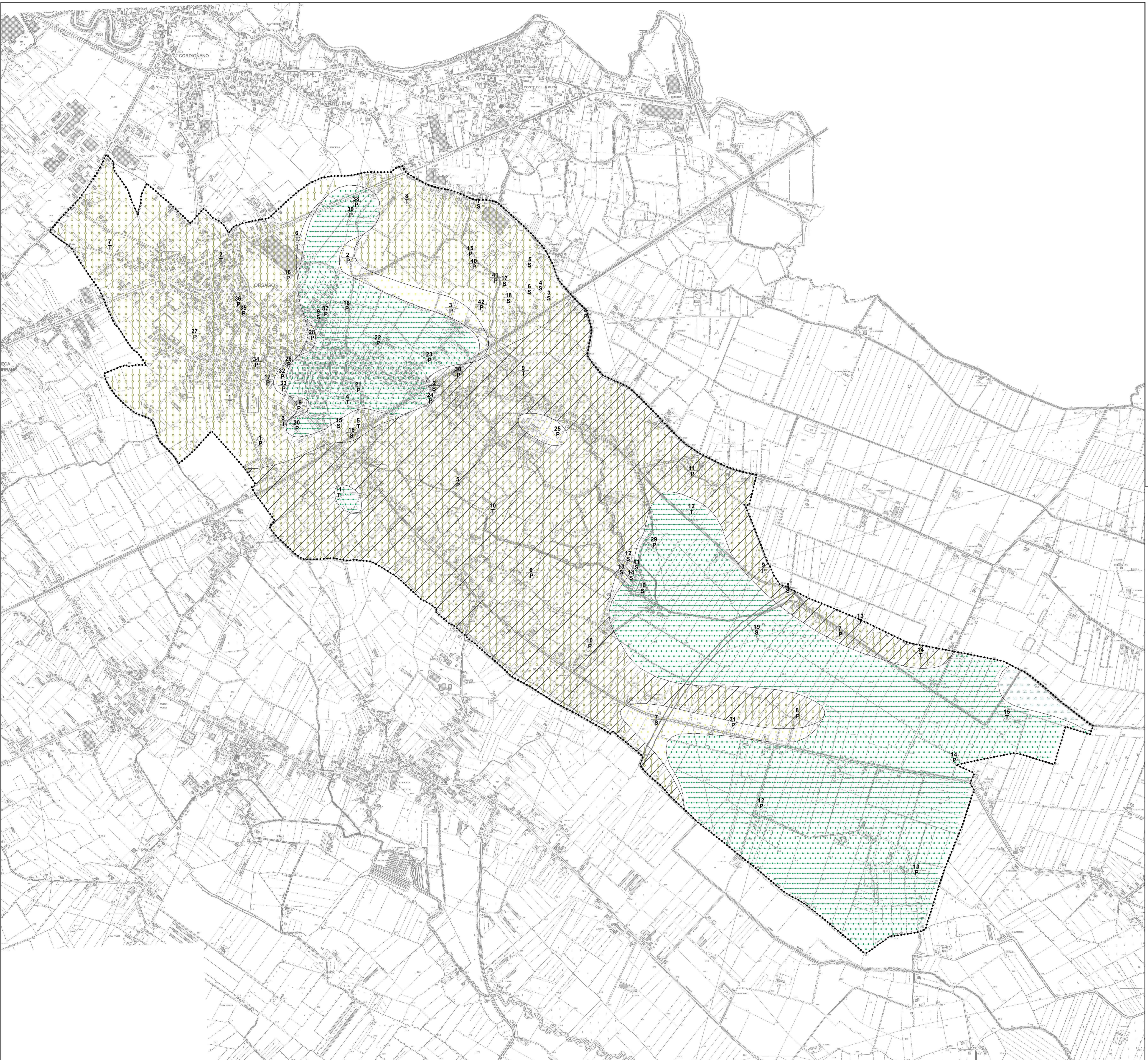




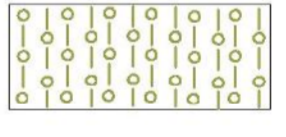
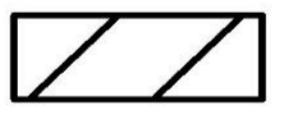

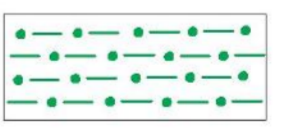
Carta Geolitologica



Dr. Geol.
Alessandro Fabbroni



LEGENDA

-  AGS - Alluvioni ghiaioso-sabbiose e sabbioso-ghiaiose ($10^{-4} \text{ cm}^2/\text{sec} < k^* < 1 \text{ cm}^2/\text{sec}$)
(con saltuarie lenticole torbose)
-  ALS - Alluvioni sabbiose e limoso-sabbiose ($10^{-6} \text{ cm}^2/\text{sec} < k^* < 10^{-4} \text{ cm}^2/\text{sec}$)
(con saltuarie lenticole ghiaiose)
-  ALA - Alluvioni argillose e limoso-argillose ($k^* < 10^{-6} \text{ cm}^2/\text{sec}$)
(con saltuarie lenticole ghiaiose e torbose)
-  APT - depositi torbosi e argilloso-torbosi

- Punti di indagine geognostica e geofisica
-  Prova penetrometrica
 -  Sondaggio
 -  Trincea

--- Confine Comunale

* Coefficiente di Permeabilità